



# YachtCharterFleet

THE SMARTEST WAY TO SEARCH



## R23

Yacht Charter Details for 'R23', the 49m Superyacht built by AMTEC

### SPECIFICATIONS

LENGTH  
49m / 160'9

BEAM                      DRAFT  
8.33m / 27'4            2.35m / 7'9

YEAR                      REFIT  
2002                      2019

CRUISING SPEED  
12 Knots

### ACCOMMODATION

GUESTS      CABINS      CREW  
**12      6      10**

#### CABIN CONFIGURATION

1 Master                      1 VIP  
2 Double                      2 Twin

### CHARTER RATES

SUMMER  
from  
**€170,000 / week + expenses**

WINTER  
from  
**€170,000 / week + expenses**

Details correct as of 29 Apr, 2024

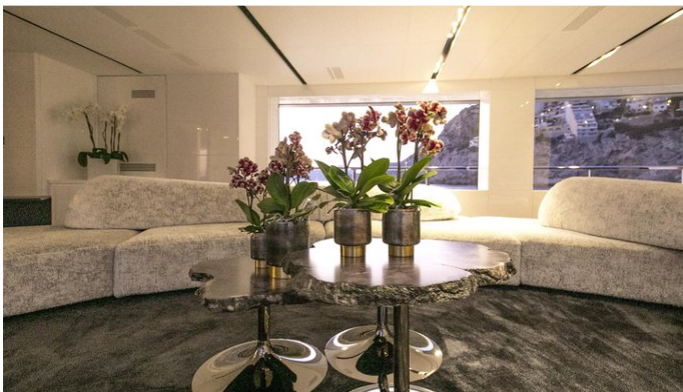


FOR MORE INFORMATION:

[CLICK HERE](#)



or SCAN QR CODE



**MORE PHOTOS, VIDEO OR INTERACTIVE DECK PLANS:**



[CLICK HERE](#)

## R23 YACHT CHARTER

Superyacht R23 was built in 2002 by AMTEC. She is a 49m / 160'9 motor yacht with exterior design by Soyaslan Marine . R23 offers accommodation for up to 12 guests in 6 cabins with additional room for her crew of 10. She features a variety of amenities to ensure comfortable charter vacations, including, Air Conditioning, WiFi connection on board, Deck Jacuzzi, Gym/exercise equipment, Stabilisers underway & Stabilizers at Anchor. She also carries an impressive collection of toys as listed below.

## R23 AMENITIES & TOYS



Jacuzzi



Stabilizers Underway



Wi-Fi



At-Anchor Stabilizers



Deck Jacuzzi



Gym



Air Conditioning

For a full up-to-date list of leisure facilities or amenities onboard Motor Yacht R23 please contact your Yacht Charter Broker prior to booking your vacation. If there is a particular water toy that you would like, but it is not listed, then it may be possible to rent this equipment for you.

**MORE TENDERS, TOYS & YACHT AMMENITIES INFO:**



[CLICK HERE](#)

## CHARTER R23

If you are interested in chartering R23 please contact your yacht charter broker for more information about booking a luxury charter vacation on board this AMTEC superyacht .